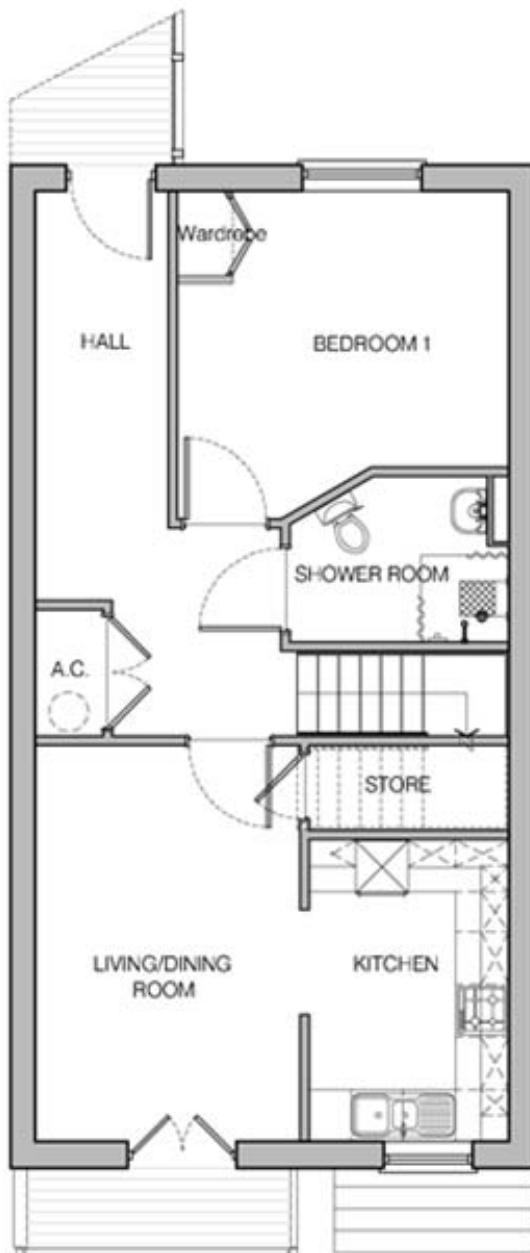


# PLOT 13 Flat Type H

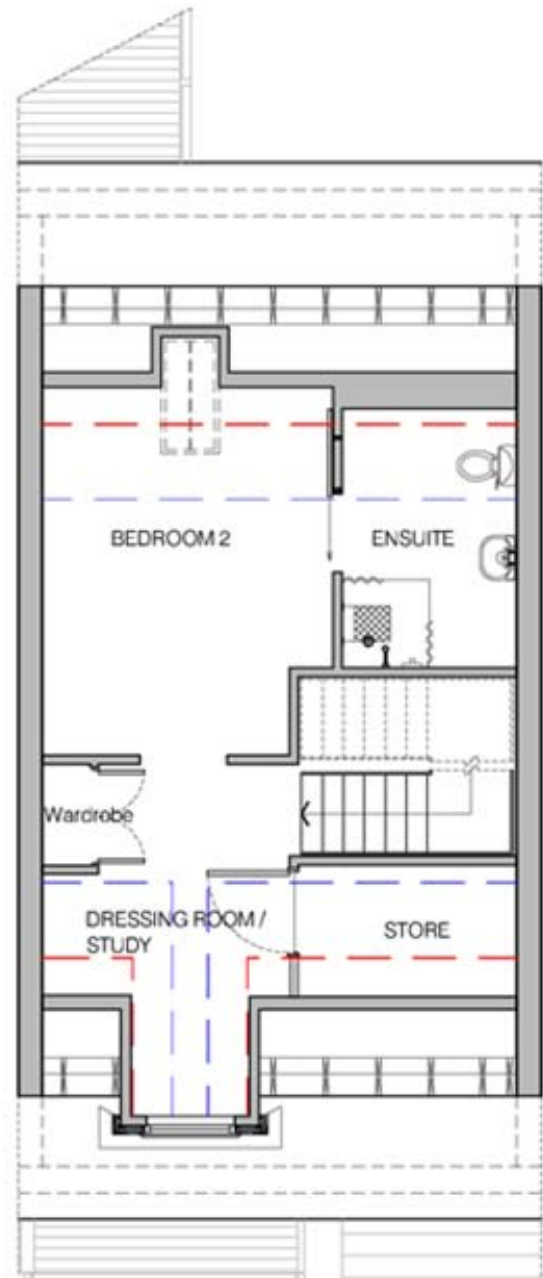
## FIRST FLOOR FLAT



### Dimensions

Living/Dining Room	4.50m x 3.00m	14' 6" x 9' 8"
Kitchen	3.45m x 2.30m	11' 2" x 7' 5"
Bedroom 1	3.80m x 3.75m	12' 4" x 12' 2"
Shower Room	2.50m x 1.90m	8' 1" x 6' 2"

## ATTIC FLOOR



### Dimensions

Bedroom 2	4.20m x 3.30m	13' 7" x 10' 7"
Ensuite	2.95m x 2.00m	9' 6" x 6' 5"
Study/Dressing Room	2.80m x 2.80m	9' 1" x 9' 1"
		Indicates 2400mm ceiling height
		Indicates 1800mm ceiling height