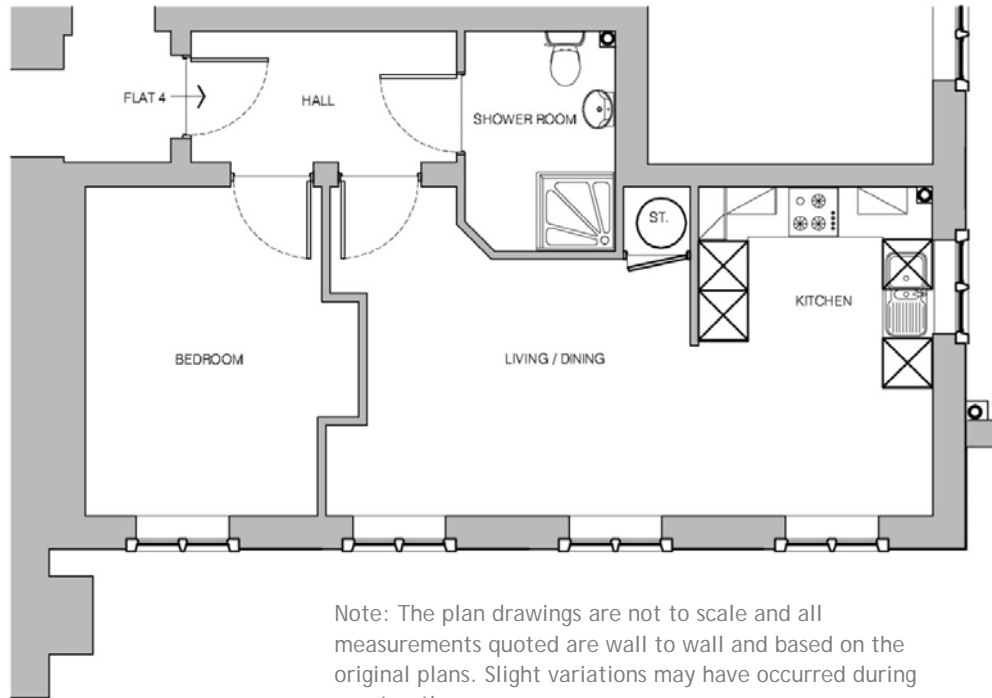


Laughton - One Bedroom Apartment

Plot 4 - Lower Ground Floor



Note: The plan drawings are not to scale and all measurements quoted are wall to wall and based on the original plans. Slight variations may have occurred during construction.

Living/Dining Room	7.40m x 4.00m	24'3" x 13'2"
Kitchen	2.84m x 2.45m	9'4" x 8'1"
Bedroom	4.00m x 3.33m	13'2" x 10'11"
Shower Room	2.68m x 1.83m	8'10" x 6'0"

Please contact Fiona Wookey on 01435 863764 or email fiona@holycrosspriory.co.uk