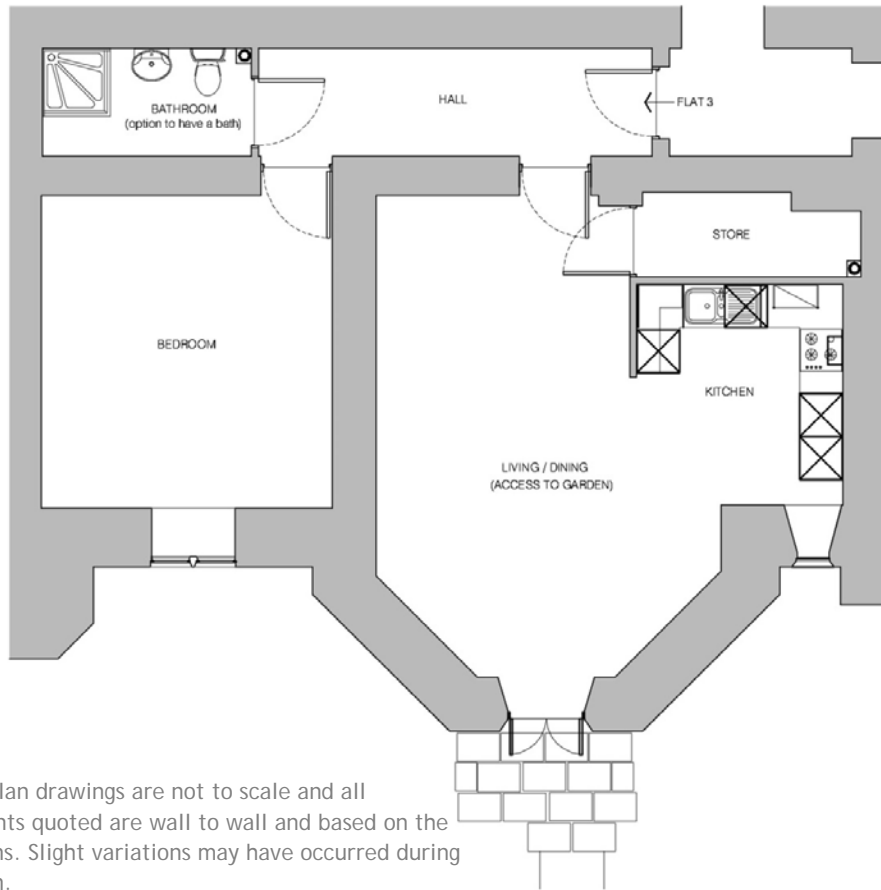


Rotherfield - One Bedroom Apartment

Plot 3 - Lower Ground Floor



Note: The plan drawings are not to scale and all measurements quoted are wall to wall and based on the original plans. Slight variations may have occurred during construction.

| | | |
|------------------------------------|---------------|----------------|
| Living/Dining Room (garden access) | 6.80m x 4.87m | 22'4" x 15'11" |
| Kitchen | 3.11m x 2.91m | 10'3" x 9'6" |
| Bedroom | 4.41m x 4.11m | 14'6" x 13'6" |
| Shower Room | 2.95m x 1.52m | 9'8" x 4'11" |

Please contact Fiona Wookey on 01435 863764 or email fiona@holycrosspriory.co.uk