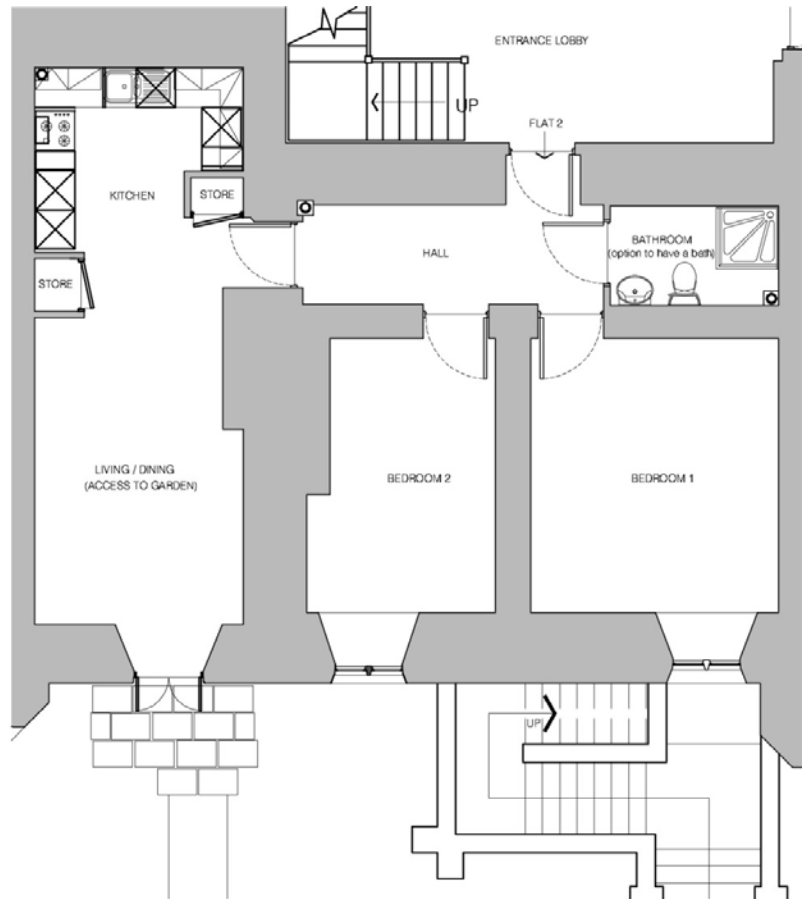


Alfriston - Two Bedroom Apartment

Plot 2 - Lower Ground Floor



Note: The plan drawings are not to scale and all measurements quoted are wall to wall and based on the original plans. Slight variations may have occurred during construction.

Living/Dining Room (garden access)	5.70m x 3.20m	18'9" x 10'6"
Kitchen	3.20m x 2.83m	10'6" x 9'4"
Bedroom 1	4.20m x 3.80m	13'9" x 12'6"
Bedroom 2	4.20m x 2.89m	13'9" x 9'6"
Shower Room	2.58m x 1.52m	8'6" x 4'11"

Please contact Fiona Wookey on 01435 863764 or email fiona@holycrosspriory.co.uk