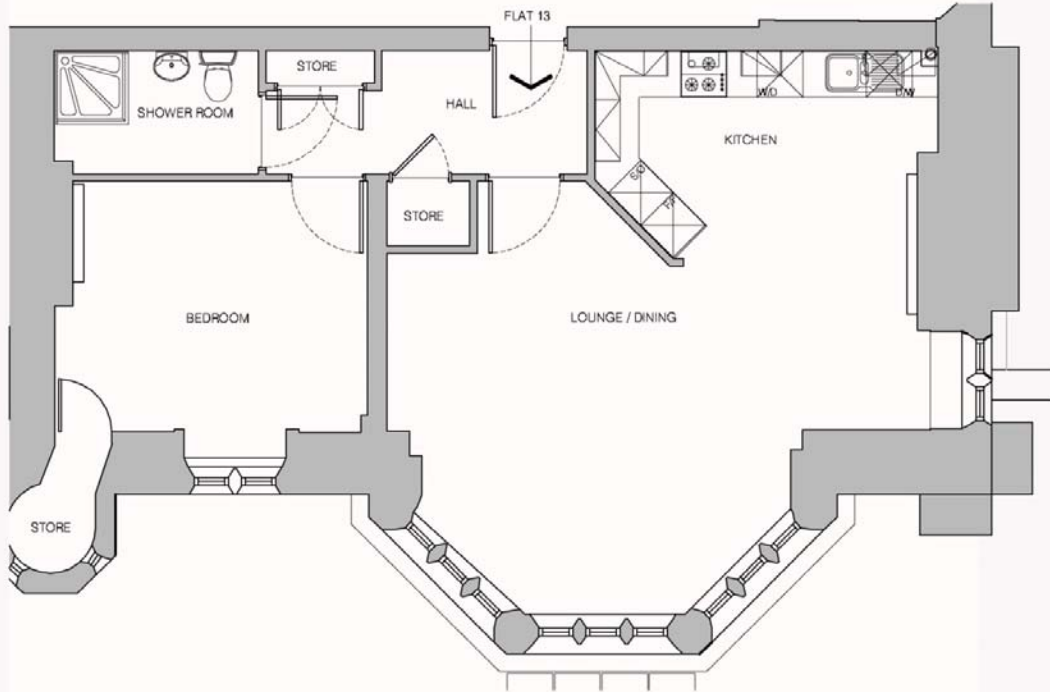


**Rodmell - One Bedroom Apartment**

Plot 13 - First Floor



Note: The plan drawings are not to scale and all measurements quoted are wall to wall and based on the original plans. Slight variations may have occurred during construction.

Living/Dining Room	7.12m x 5.67m	23'4" x 18'7"
Kitchen	4.50m x 2.72m	14'9" x 8'11"
Bedroom	4.09m x 3.28m	13'5" x 10'9"
Bathroom	2.67m x 1.61m	8'9" x 5'4"

Please contact Fiona Wookey on 01435 863764 or email [fiona@holycrosspriory.co.uk](mailto:fiona@holycrosspriory.co.uk)

[www.holycrosspriory.co.uk](http://www.holycrosspriory.co.uk)