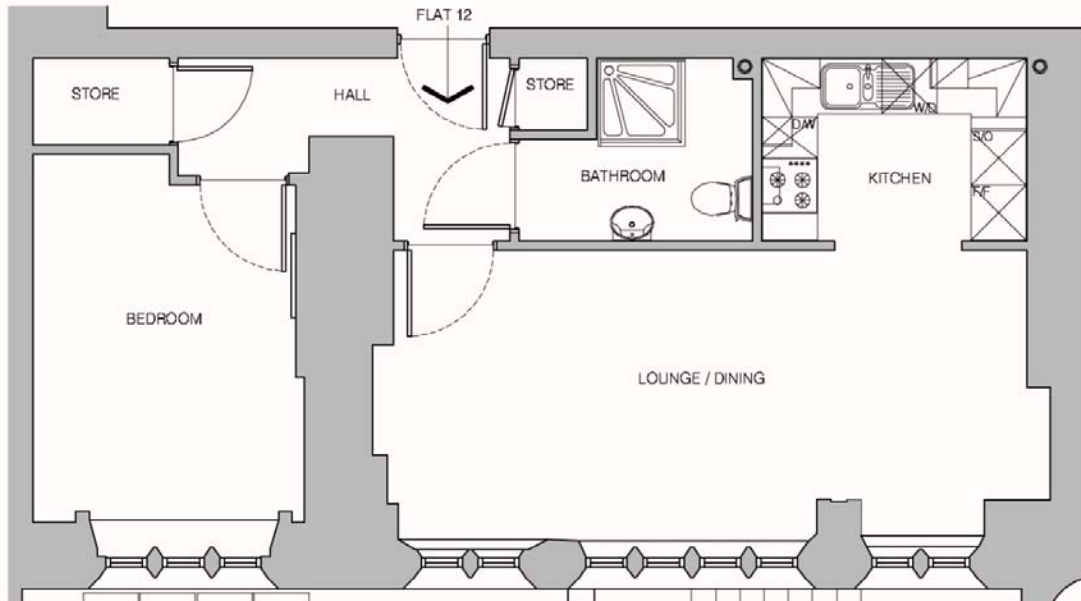


Ticehurst - One Bedroom Apartment

Plot 12 - First Floor



Note: The plan drawings are not to scale and all measurements quoted are wall to wall and based on the original plans. Slight variations may have occurred during construction.

Living/Dining Room	7.40m x 3.16m	24'4" x 10'5"
Kitchen	2.89m x 2.00m	9'6" x 6'7"
Bedroom	4.01m x 2.96m	13'2" x 9'8"
Bathroom	3.03m x 2.62m	9'11" x 8'7"

Please contact Fiona Wookey on 01435 863764 or email fiona@holycrosspriory.co.uk

www.holycrosspriory.co.uk