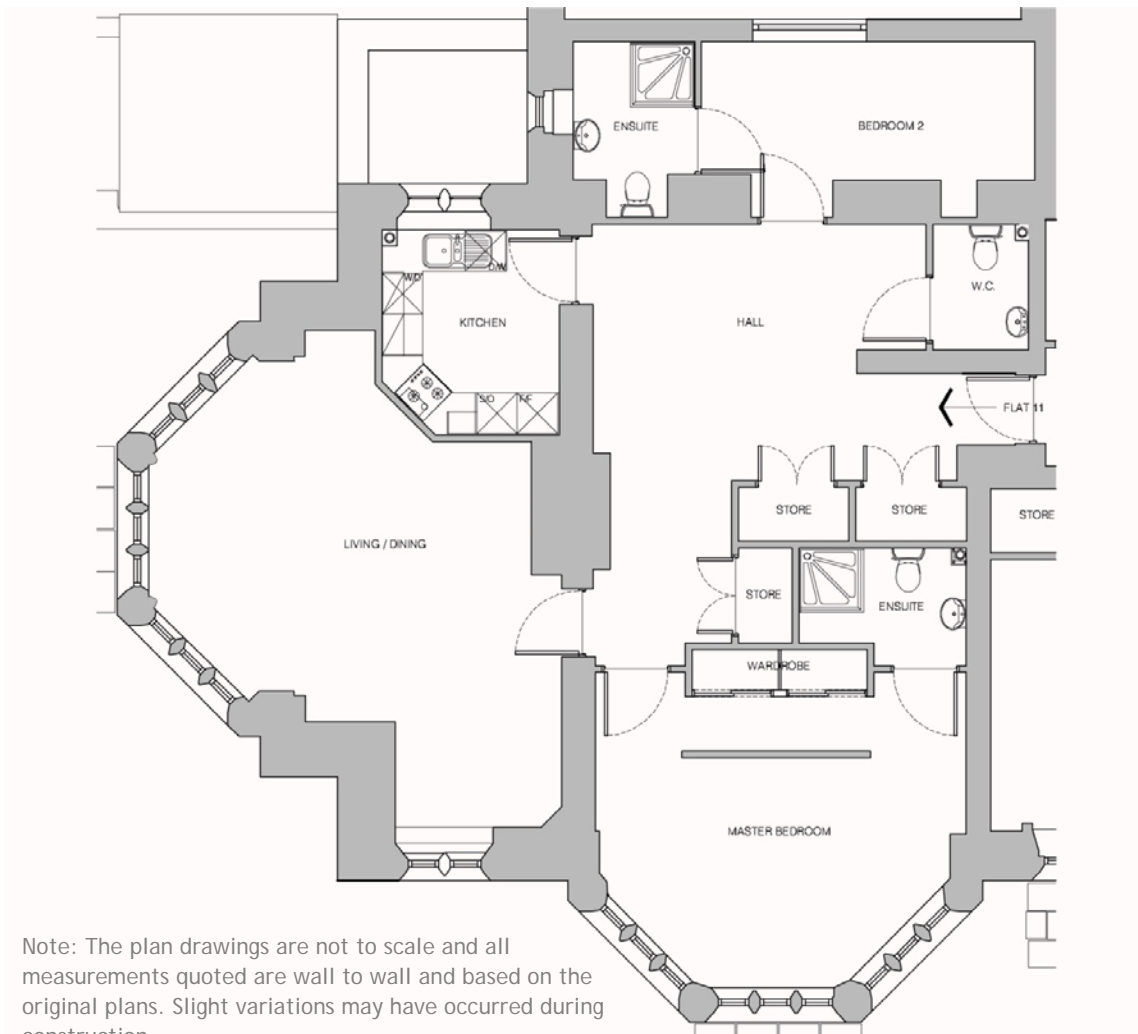


**Hamsey - Two Bedroom Apartment**

Plot 11 - First Floor



Note: The plan drawings are not to scale and all measurements quoted are wall to wall and based on the original plans. Slight variations may have occurred during construction.

Living/Dining Room	7.34m x 5.65m	24'1" x 18'7"
Kitchen	3.03m x 2.62m	9'11" x 8'7"
Master Bedroom	5.48m x 4.65m	18'0" x 15'4"
En Suite	2.46m x 1.40m	8'1" x 4'7"
Bedroom 2	4.92m x 2.04m	16'2" x 6'8"
En Suite	2.59m x 1.80m	8'6" x 5'11"
W.C.	1.86m x 1.41m	6'1" x 4'8"

Please contact Fiona Wookey on 01435 863764 or email [fiona@holycrosspriory.co.uk](mailto:fiona@holycrosspriory.co.uk)