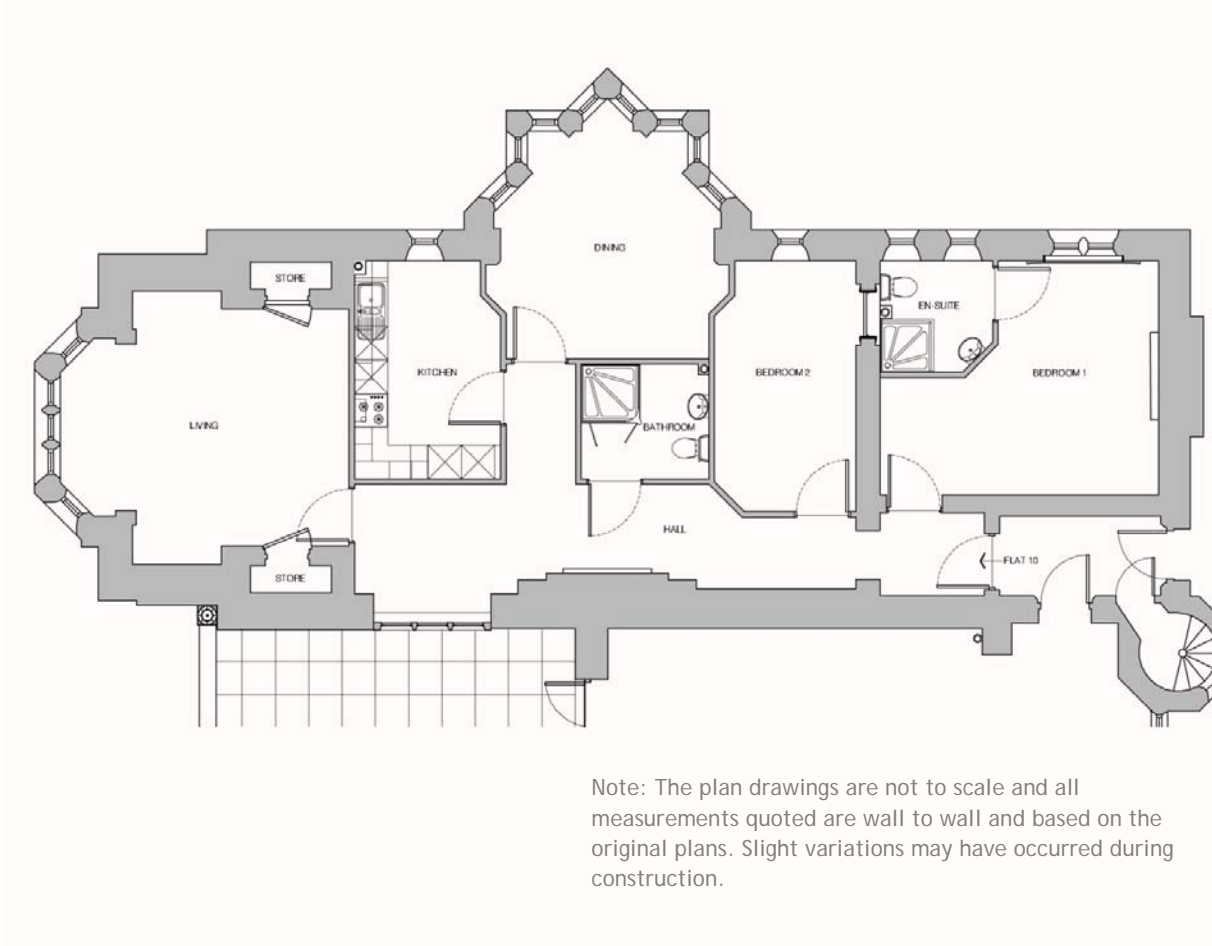


**Mayfield - Two Bedroom Apartment**

Plot 10 - Ground Floor



Living Room	5.20m x 4.91m	17'1" x 16'2"
Dining Room	4.38m x 4.09m	14'5" x 13'5"
Kitchen	3.92m x 2.63m	12'10" x 8'8"
Bedroom 1	5.02m x 4.20m	16'6" x 13'10"
En Suite	2.03m x 2.00m	6'8" x 6'7"
Bedroom 2	4.51m x 2.81m	14'10" x 7'2"
Bathroom	2.30m x 2.06m	7'6" x 6'9"

Please contact Fiona Wookey on 01435 863764 or email [fiona@holycrosspriory.co.uk](mailto:fiona@holycrosspriory.co.uk)